



OAKFIELD



New Road, Ridgewood, Uckfield, TN22 5TE

Price Guide £325,000



New Road, Ridgewood, Uckfield, TN22 5TE

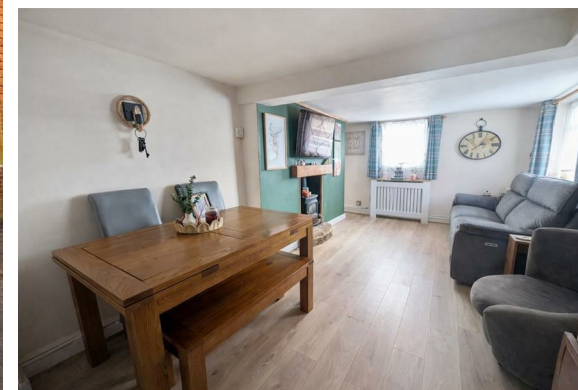
PRICE GUIDE OF £325,000-£350,000!
An attractive character part-tile hung cottage, ideally situated in a quiet road in Ridgewood, with direct access to Millennium Green and Ridgewood Park.

Upon arrival, you are immediately drawn to the charm of this delightful home, which also benefits from ample off-road parking. The outer lobby/utility room provides access into a stylish, bright and airy kitchen, enjoying pleasant views over the rear garden.

The spacious lounge/diner offers the perfect sanctuary for both relaxation and entertaining, with ample space for a dining table and featuring an attractive gas fireplace as a focal point.

Upstairs, the property boasts two well-proportioned bedrooms, serviced by a generous family bathroom.

The rear garden is a true highlight—an inviting and private sanctuary featuring two patio seating areas and well-maintained lawned sections. It provides an ideal setting for outdoor dining and entertaining, particularly during the summer months.





Living Room

16'11" x 10'4" (5.16m x 3.15m)

Kitchen

9'4" x 7'0" (2.84m x 2.13m)

Boot Room

Bedroom 1

9'9" x 9'7" (2.97m x 2.92m)

Bedroom Two

9'5" x 7'1" (2.87m x 2.16m)

Council Tax Band C - £2,504.68 Per Annum



Floor Plan

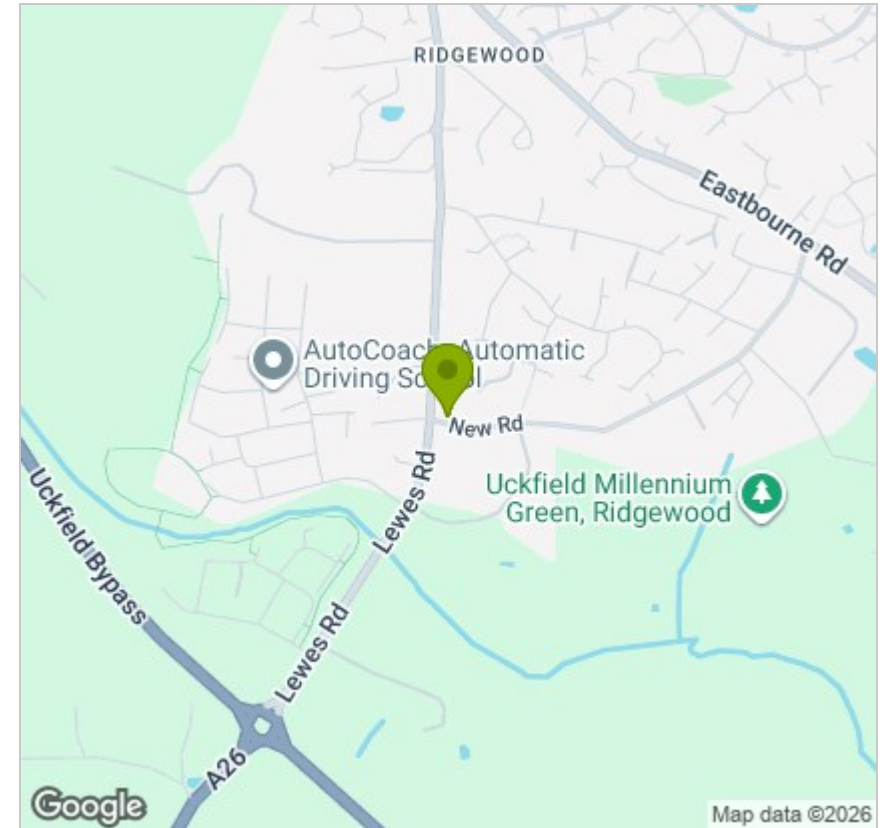


Viewing

Please contact us on 01825 762132 if you wish to arrange a viewing appointment for this property or require further information.

These particulars, whilst believed to be accurate are set out as a general outline only for guidance and do not constitute any part of an offer or contract. Intending purchasers should not rely on them as statements of representation of fact, but must satisfy themselves by inspection or otherwise as to their accuracy. No person in this firm's employment has the authority to make or give any representation or warranty in respect of the property.

Area Map



Energy Efficiency Graph

